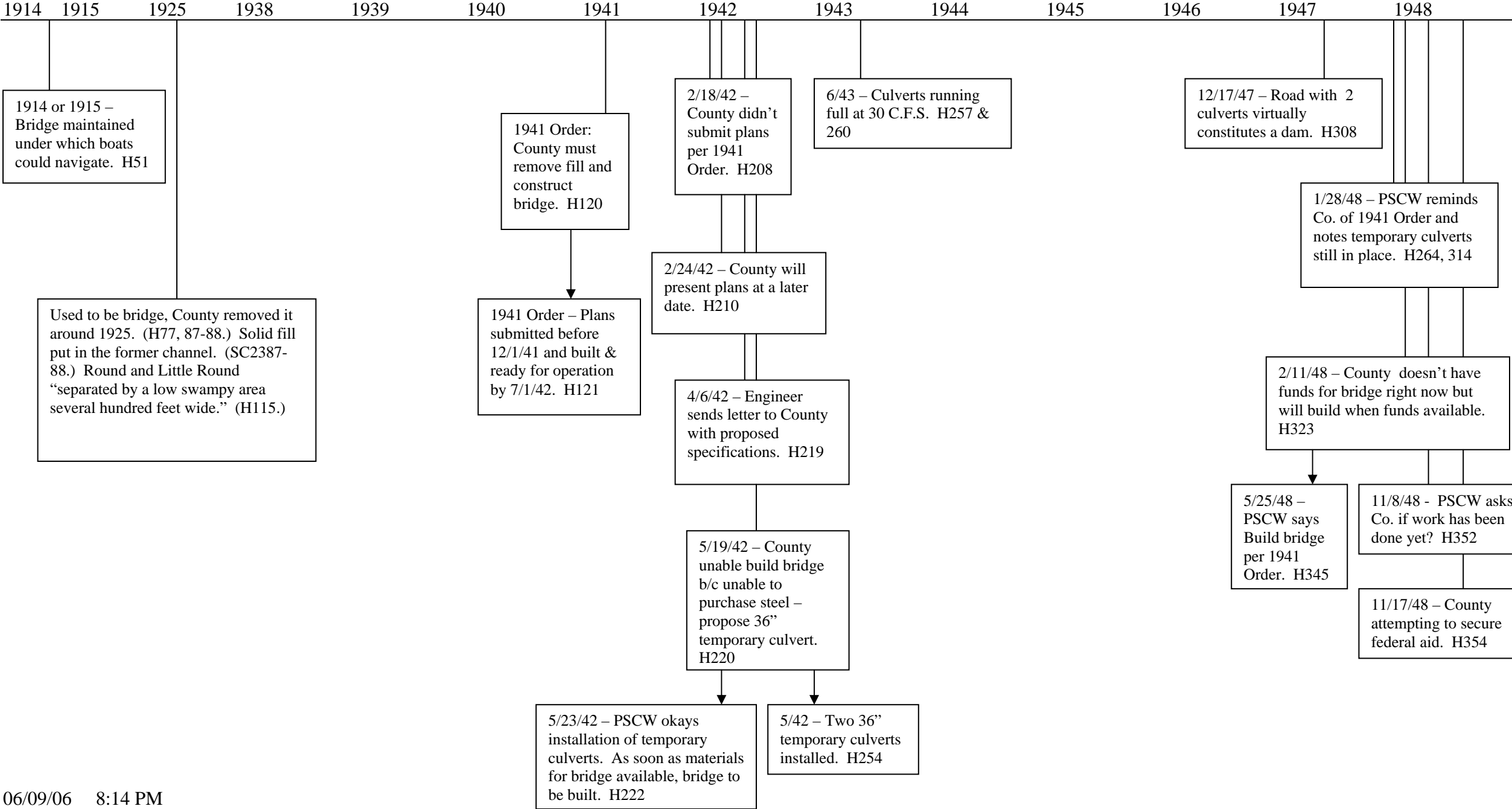
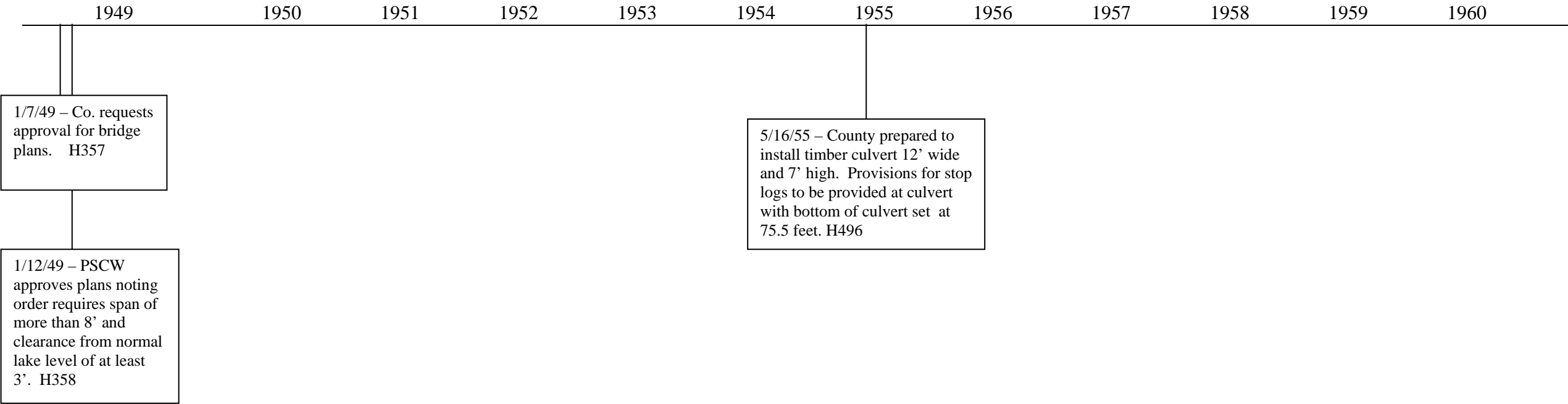


HISTORY OF COUNTY HIGHWAY B CONTROL STRUCTURES



HISTORY OF COUNTY HIGHWAY B CONTROL STRUCTURES



HISTORY OF COUNTY HIGHWAY B CONTROL STRUCTURES

1961 1962 1963 1964 1965 1966 1967 1968 1969 1970 1971 1972

A resident describes a very large "culvert" at Cty Hwy B. SC1169-1171.

HISTORY OF COUNTY HIGHWAY B CONTROL STRUCTURES

1973 1974 1975 1976 1977 1978 1979 1980 1981 1982 1983 1984

County gets permit to dredge around the bridge. SC1175-1178

HISTORY OF COUNTY HIGHWAY B CONTROL STRUCTURES

1985 1986 1987 1988 1989 1990 1991 1992 1993 1994 1995 1996
